

ARES Series

New DOOH solution, save 50% running cost



Luxury
Look



Stable and Reliable
Performance

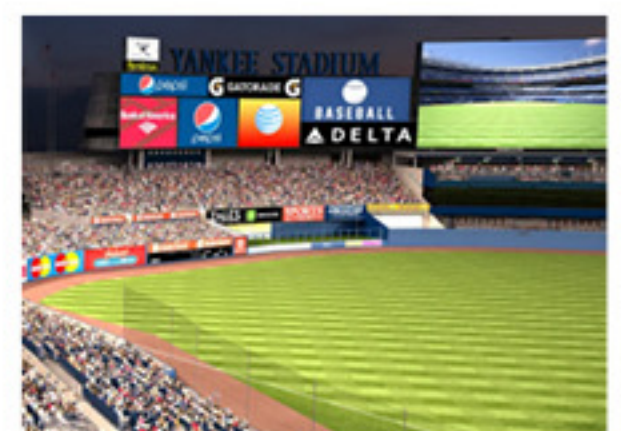
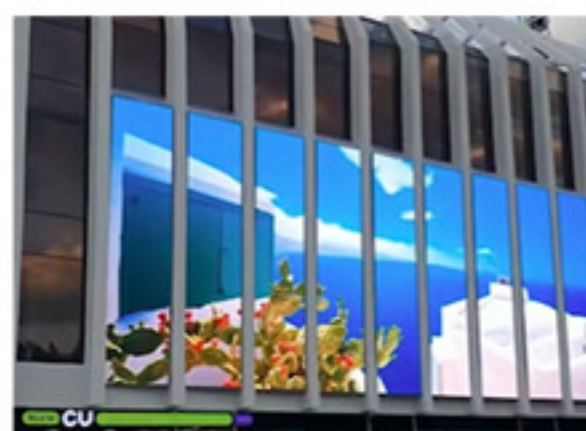


Provide Immersive
Viewing Experience



Economical

► Various applications



Billboard / landmark / street display / digital signage / traffic billboard / Arena display

Luxury Look

Saving operation cost (shipping cost, labor cost, steel structure cost)



Modular technology



Size: 1000 x 1000mm
1000 x 750mm
1000 x 500mm
match different projects



Light
Only 23kgs/SQM



Fanless
Good cooling system



Simple structure
Wall-mounted available



Maintenance
Convenient, front and rear access

Stable and Reliable Performance

Superior image quality



Up to 10000nits
High brightness



50% energy-saving



3840Hz
High refresh rate



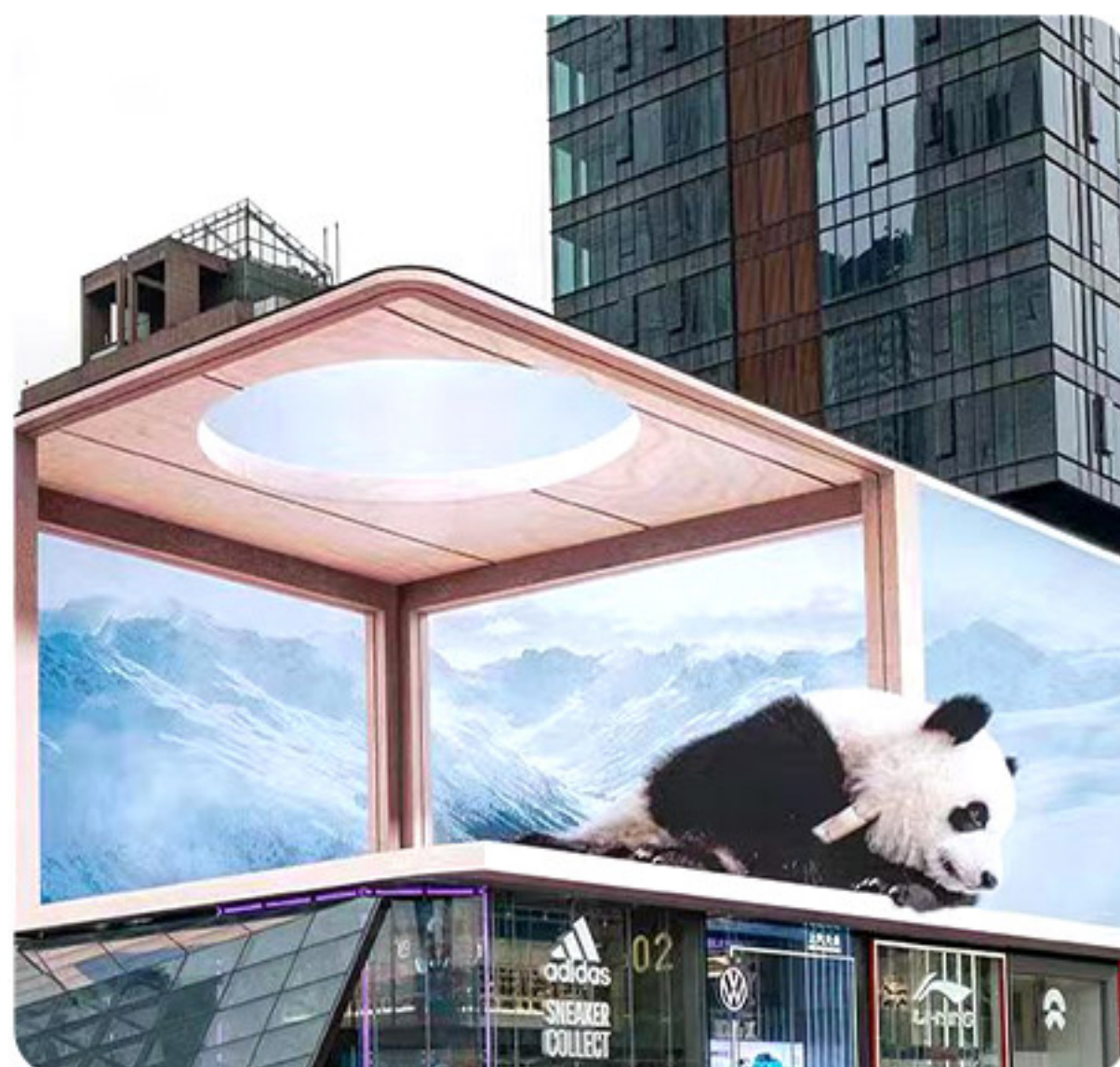
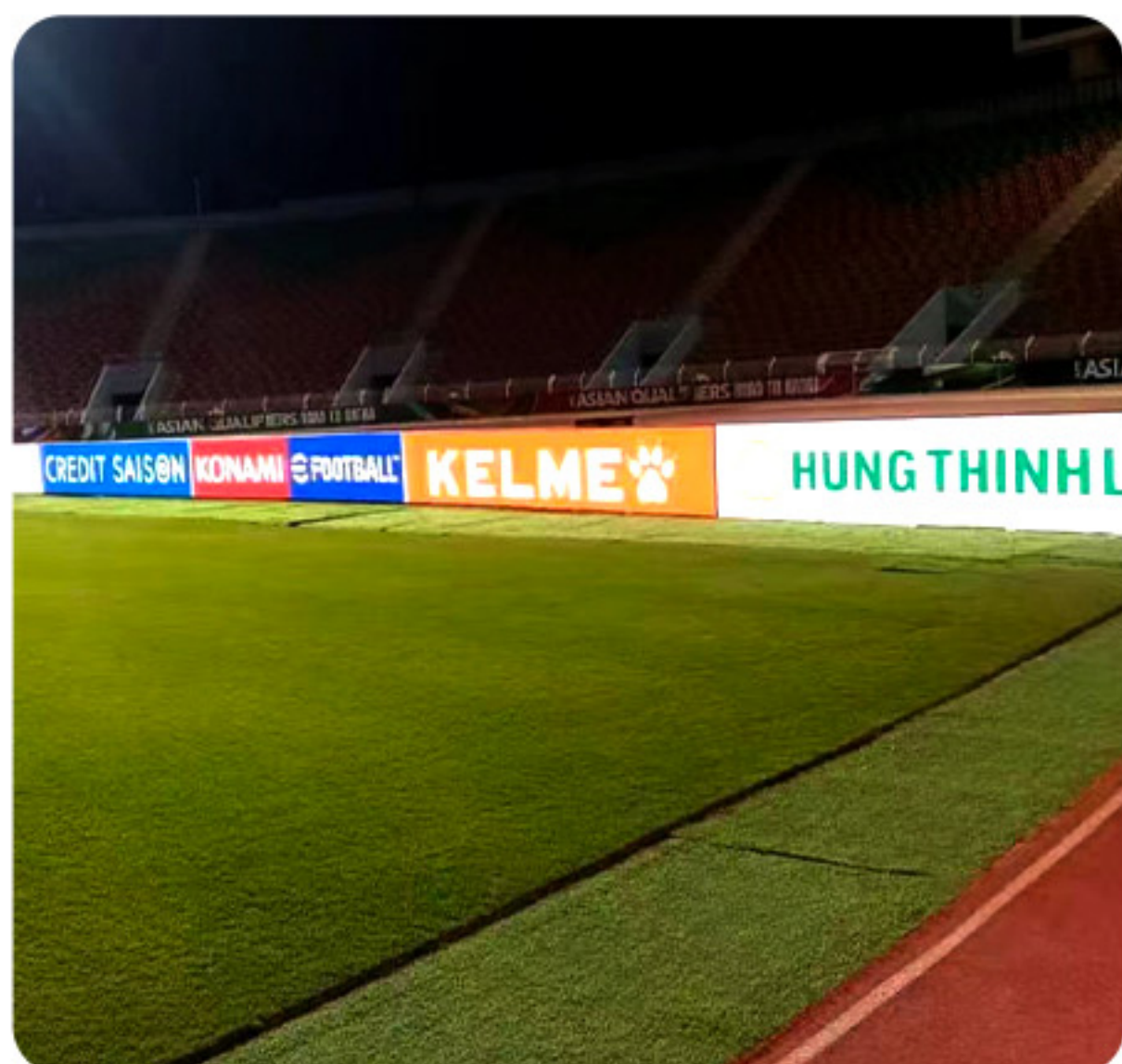
Heat Dissipation
Professional design

More functions

Available for stadium perimeter system

L-type for better immersive watching experiences

Be the best moment for naked-eye 3D image enhancement



► Technical Specifications

Pixel pitch	P3.9mm	P4.8mm	P6.2mm	P7.8mm	P10.4mm
LED Type	SMD1921	SMD1921	SMD2727	SMD2727	SMD2727
Pixel Density(dot/m ²)	65,410	43,222	25,600	16,394	9,227
Module Size (mm)	500 x 250	500 x 250	500 x 250	500 x 250	500 x 250
Module Resolution (pixels)	128*64	104 x 52	80 x 40	64 x 32	48 x 24
Panel Size (mm)	1000x1000mm/1000x750mm/1000x500mm				
Panel Resolution (pixels)	256x256 256x192 256x128	208x208 208x156 208x104	160x160 160x120 160x80	128x128 128x96 128x64	96x96 96x72 96x48
Power Consumption (max./avg.)	200W / 600W				
Material	Aluminum profile				
Panel Weight	23KG / SQM				
Brightness	6500nits - 10000nits				
Grey Level	16bit				
Input(V)	110-220V, 50-60Hz				
Refresh Frequency	3840Hz				
Operating Temperature	-20°C+60°C				
Ingress Protection	IP65				
Certification	ETL/FCC/CE/CCC				

Shenzhen SoStron Technology Co.,Ltd

Building D, SanMin Industrial Park, Shilongzai, Shiyan Town, Baoan District, Shenzhen, China

Contact us +86 755 2334 3844 info@sostron.com www.sostron.com